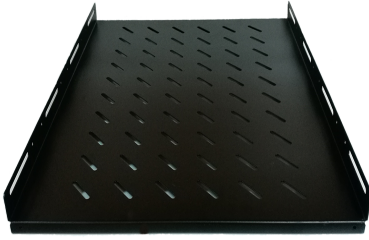


Fixed Shelf



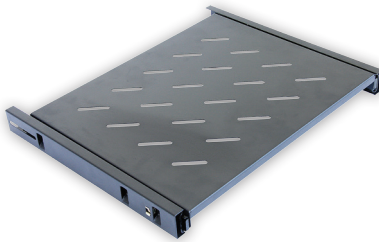
Features

- *Materials: 1.2mm cool rolled steel.*
- *Color: black/gray.*
- *Surface finish: Degreasing, phosphoric, water cleaning, electro-static powder coating.*
- *Applications: setting hosts, monitor or other terminal/ ancillary equipment. Supporting 600,800,1000 width cabinets.*

ORDERING INFORMATION

| PART NUMBER | DESCRIPTION |
|---------------|-------------------------------|
| TL-CAC-SHF-45 | 19" Fixed Shelf 450 mm depth |
| TL-CAC-SHF-60 | 19" Fixed Shelf 600 mm depth |
| TL-CAC-SHF-80 | 19" Fixed Shelf 800 mm depth |
| TL-CAC-SHF-10 | 19" Fixed Shelf 1000 mm depth |

Sliding Shelf



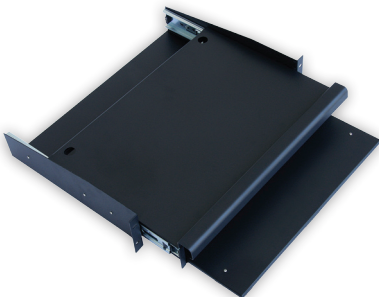
Features

- *Materials: 1.2mm cool rolled steel.*
- *Color: black/gray.*
- *Surface finish: Degreasing, phosphoric, water cleaning, electro-static powder coating.*
- *Applications: setting equipments requiring frequent operation Supporting 600,800,1000 width cabinets.*

ORDERING INFORMATION

| PART NUMBER | DESCRIPTION |
|---------------|---------------------------------|
| TL-CAC-SHS-60 | 19" Sliding Shelf 600 mm depth |
| TL-CAC-SHS-80 | 19" Sliding Shelf 800 mm depth |
| TL-CAC-SHS-10 | 19" Sliding Shelf 1000 mm depth |

Keyboard Panel



Features

- *Materials: 1.2mm cool rolled steel.*
- *Rail: 12'/14' 2-section slide rail.*
- *Load bearing: 20kg.*
- *Color: black/gray.*
- *Surface finish: Degreasing, phosphoric, water cleaning, electro-static powder coating.*
- *Supporting 600,800,1000 width cabinets.*

ORDERING INFORMATION

| PART NUMBER | DESCRIPTION |
|--------------|--------------------|
| TL-CAC-KP-60 | 19" Keyboard Panel |

Cantilever Shelf



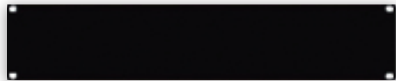
Features

- *Materials: 1.2mm cool rolled steel.*
- *Color: black/gray.*
- *Surface finish: Degreasing, phosphoric, water cleaning, electro-static powder coating*
- *Applications: setting hosts, monitor or other terminal/ ancillary.*

ORDERING INFORMATION

| PART NUMBER | DESCRIPTION |
|----------------|-----------------------------------|
| TL-CAC-SHC-250 | 19" Cantilever Shelf 250 mm depth |
| TL-CAC-SHC-300 | 19" Cantilever Shelf 300 mm depth |
| TL-CAC-SHC-350 | 19" Cantilever Shelf 350 mm depth |

Blank Panel



Features

- *Materials: 1.2mm cool rolled steel.*
- *Color: black/gray.*
- *Surface finish: Degreasing, phosphoric, water cleaning, electro-static powder coating*
- *Applications: shielding equipment inside, dust-pro, and making cabinet looking neat.*

ORDERING INFORMATION

| PART NUMBER | DESCRIPTION |
|--------------|--------------------|
| TL-CAC-BP-1 | 19" 1U Blank Panel |
| TL-CAC- BP-2 | 19" 2U Blank Panel |
| TL-CAC- BP-4 | 19" 4U Blank Panel |

Cooling Fan



Features

- *Specification: 220-240VAC, 50/60HZ, medium speed.*
- *Dimension: 120mm*120mm*38mm.*
- *Fame made by aluminum. Color: black.*
- *Air delivery: 195M3/H .*
- *Noise: <48dB.*
- *Working temperature: 0-70.*
- *Mounting position: horizontal mounting on the top of cabinet.*

ORDERING INFORMATION

| PART NUMBER | DESCRIPTION |
|--------------|---------------|
| TL-CAC-CF-1 | 1 Cooling Fan |
| TL-CAC- CF-2 | 2 Cooling Fan |
| TL-CAC- CF-4 | 4 Cooling Fan |

Vertical Cable Manager



Features

- *Materials: 1.2mm cool rolled steel.*
- *Color: black/gray.*
- *Features: overall one-shot stamped; convenient for disassembling&mounting.*
- *Dimension: width: 60mm, depth: 95mm.*

| ORDERING INFORMATION | |
|----------------------|------------------------|
| PART NUMBER | DESCRIPTION |
| TL-CAC-CMV | Vertical Cable Manager |

Horizontal Cable Manager - Ring Type



Features

- *Panel Frame: Carbon Steel, T=1.5mm, Powder Coating*
- *Metal Buckle: Carbon Steel, T=2.0mm, Powder Coating*
- *Color: Black*
- *Burr: 0.05mm Max*

| ORDERING INFORMATION | |
|----------------------|----------------------------|
| PART NUMBER | DESCRIPTION |
| TL-CAC-CMRG-1 | 1U Cable Manager Ring Type |

Horizontal Cable Manager - Box Type



Features

- *Cover Material: Carbon Steel, T=1.0mm, Powder Coating*
- *Bottom Material: Black*
- *Color: Black*
- *Burr: 0.05mm Max*

| ORDERING INFORMATION | |
|----------------------|---------------------------|
| PART NUMBER | DESCRIPTION |
| TL-CAC-CMBX-1 | 1U Cable Manager Box Type |

Horizontal Cable Manager - Brush Type



Features

- Panel Frame: Carbon Steel, T=1.5mm, Powder Coating
- Color: Black
- Burr: 0.05mm Max

ORDERING INFORMATION

| PART NUMBER | DESCRIPTION |
|---------------|-----------------------------|
| TL-CAC-CMBR-1 | 1U Cable Manager Brush Type |

Castors



Features

- Load holding: 150kg/pcs, 240kg/pcs.
- Wheel made from good quality nylon compound.
- Features: free rotating, heavy loading.
- Mounting position: on the bottom of cabinet.
- Applications: moving cabinet easily to any direction.

ORDERING INFORMATION

| PART NUMBER | DESCRIPTION |
|-------------|--------------------|
| TL-CAC-CST | Heavy Duty Castors |

Screws and Nuts



Features

- Nuts: M6 spring square nuts.
- Screw: M6*12 screw.
- Surface finish: zinc coating.
- Applications: fixing cabinet and 19' EIA standard equipment.

ORDERING INFORMATION

| PART NUMBER | DESCRIPTION |
|-------------|-----------------------|
| TL-CAC-SN | Square Nut and Screws |

Lock



Features

- Name: cabinet lock.
- Specifications: round lock (optional).
- Surface treatment: spray.
- Characteristics: the key to universal.
- Mounting position: the cabinet front door, back door and side door.

ORDERING INFORMATION

| PART NUMBER | DESCRIPTION |
|-------------|--------------|
| TL-CAC-LK | Cabinet Lock |

Digital Temperature Unit



Features

- Power supply: 85-265VAC.
- Sensor: International cu50 resistance.
- Measuring range: -20—80.
- Measurement accuracy: 1.0(+/-1.0%).
- Sampling rate: 2/second.
- Output form: double relays(one group for master control, another one for alarm).
- Sensor's differential gap adjustable.
- Sensor support open circuit alarm.
- Power consumption: <5W.
- Ambient temperature: -10-50

ORDERING INFORMATION

| PART NUMBER | DESCRIPTION |
|-------------|--------------------------|
| TL-CAC-DTU | Digital Temperature Unit |

Power Distribution Unit



Features

- Power supply: 85-265VAC.
- 6 Way, 10 Way, 12 Way
- 13 Amps, 16 Amps, 32 Amps
- Industrial PDU's are also available.

ORDERING INFORMATION

| PART NUMBER | DESCRIPTION |
|--------------|-------------------------------|
| TL-CAC-PDU6 | 6 Way PDU, 1U, 2 Meter Cable |
| TL-CAC-PDU10 | 10 Way PDU, 1U, 2 Meter Cable |
| TL-CAC-PDU12 | 12 Way PDU, 1U, 2 Meter Cable |