

Rittal – The System.

Faster – better – everywhere.

Compact light – SZ 4140.010

Date : Feb 13, 2020

ENCLOSURES

POWER DISTRIBUTION

CLIMATE CONTROL

IT INFRASTRUCTURE

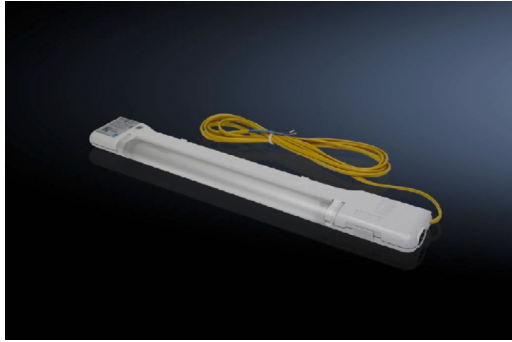
SOFTWARE & SERVICES

FRIEDHELM LOH GROUP



Compact light – SZ 4140.010

: 13.02.2020 build on www.rittal.com/ca-en



Discontinued article.

Product description

Benefits: Slimmer: Height and depth reduced by around 50%, takes up 75% less volume than conventional lights
Faster: Universal quick-release fastening at TS punchings using clips, screws or powerful magnets (optional). Easy to insert at the sides or rear, fit light and you're done!
Door-operated switch connection can be made using 2-pole connector
Transparent light cover, fluted on inside

Color: Similar to RAL 7035

**Protection category
IP to IEC 60 529:** IP 20

Supply includes: Compact light with clip and screw mounting kits
Light (bulb)
Light cover
Connection cable
Assembly components

Note: Door-operated switch connection can be made using 2-pole connector

Note on Model No.: Cable deflector across rear possible

Product features

Dimensions: Height: 59 mm (2.3 ")
Width: 455 mm (18 ")
Depth: 24 mm (0.94 ")

**Rated operating
voltage:** 100 V - 240 V, 1~, 50 Hz/60 Hz
Voltage tolerance: $\pm 10 \%$

| | |
|---|--|
| Installation options: | TS horizontal profile from roof frames: direct TS, SE vertical profile, direct SE profiles to the front and rear of roof frames: direct SE profiles to the side of roof frames: direct AE, CM, TP: with magnet mounting kit AE: with rail for interior installation |
| Mounting dimensions: | Mounting distance – clip/magnet: 400 mm (16 ") Mounting distance – screw attachment: 475 mm (19 ") |
| Operating temperature: | Operation (environment): -15 °C...+45 °C Storage: -20 °C...+70 °C |
| Rated current: | At 230 V/50 Hz: 0,045 A - 0,088 A For 110 V/60 Hz: 0,083 A - 0,149 A |
| Power consumption: | 8 W |
| Equipment (electrical): | Ballast: Wide range voltage EB Light (bulb): T5 fluorescent lamp Length of connection cable: 3 m (118 ") Cable color: Yellow Switch (type): Integral, on/off/door-operated switch mode |
| Rated insulation voltage: | 500 V DC/1s |
| Rated impulse withstand voltage, phase to earth: | 1000 V AC |
| Rated impulse withstand voltage, phase to phase: | 500 V AC |
| Protection category: | II (total insulation) |
| Connection options: | Integrated connection cable with open end Door-operated switch |
| Light – installation type: | Screw fastening Clip fastening Magnetic fastener (accessories) |
| Cable deflector across rear possible: | yes |
| Light cover: | yes |
| Packaging unit: | 1 pc(s). |
| Weight/packaging unit: | 0.6 kg (1.3 lb.) |
| Copper weight (kg per piece): | 0 |

EAN: 4028177522725

Customs tariff number: 94054095

ETIM 7.0: EC000321

ETIM 6.0: EC000321

eCl@ss 8.0/8.1: 27189241

eCl@ss 6.0/6.1: 27189241

Product description: SZ Compact light, WHD: 455x59x24 mm, 8 W, 100-240 V, 50/60 Hz, Integral on/off/door-operated switch mode, ENEC

Approvals

Certificates: EAC
