

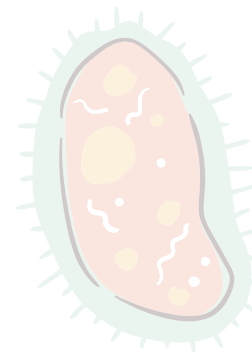
Social Distancing Alert



DESCRIPTION

K18, K28 & K58(S) are portable and wearable Bluetooth Low Energy (BLE) device, designed as a technological aid to control the distance between people in workplace, school, and public area, prevent people getting too close with each other.

It can work as “device to device” solution. Also, it can use for tracking and managing the proximity of contracts between people via IoT gateway.



OUR PRODUCT



Advantages of KKM proximity alert solution

- Sound or Vibration or Sound&Vibration alert
- Wearable and portable design
- Wristband type, pendant type available
- Battery replaceable or rechargeable
- Small and light, stylish
- Group ID
- Patent algorithm, reliable proximity solution
- Alert distance adjustable
- Auto Sleep mode
- Proximity history

PRODUCT SPECIFICATION

Model--K18

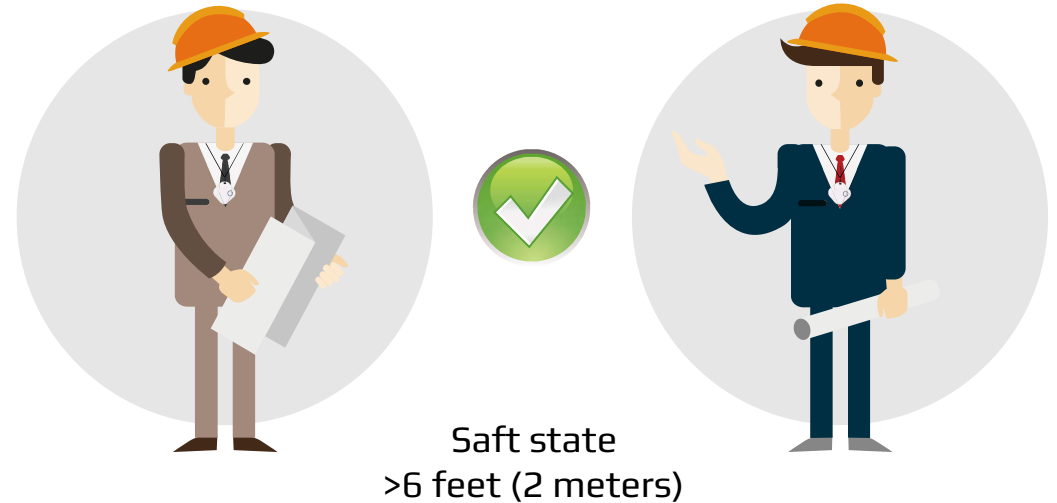


Item	Description
Dimension	36mm*36mm
Thickness	5.6mm
Alert Way	Vibration/LED
Alert Distance	1~3 meters (3~6 feet) adjustable
Battery Type	CR2032 replaceable
Battery Life	30 days (12 hours usage per day)
Button	ON/OFF button
Transmitting Protocol	BLE5.0
Accessories	Strap
Material	ABS

Device to Device Solution

Each device will make vibration/sound/LED alert when they are close with each other.

- Simply press button to ON/OFF
- No Smartphone needed
- No App needed
- Trigger sound/LED alert
- Trigger Vibration/sound/LED alert



ADVANCED FEATURES

With the App, you can achieve more features for the products.

Product Status

Battery Level: easy to monitor the battery status

Globally Unique Device Identification Code

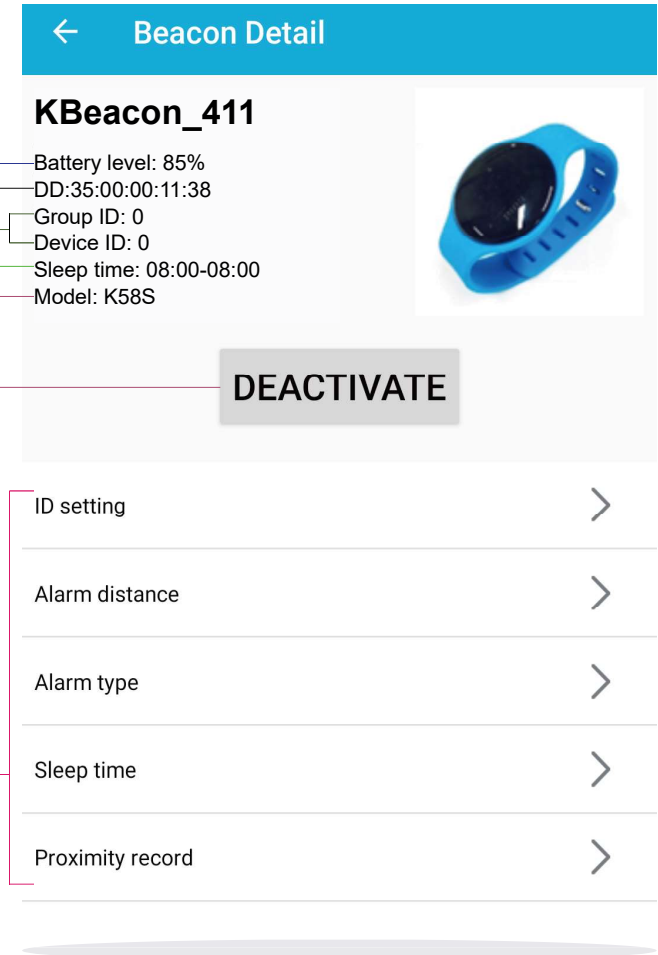
Group ID & Device ID
(Value=0 in default if this Grop ID and Device ID is not set)

Sleep Time: the device will go into sleep mode in this period

Model Number

ACTIVATE: Proximity alert feature is off. Click to turn on
 DEACTIVATE: Proximity alert feature is on. Click to turn off

Advanced Features



KBeacon_411

Battery level: 85%
 DD:35:00:00:11:38
 Group ID: 0
 Device ID: 0
 Sleep time: 08:00-08:00
 Model: K58S



DEACTIVATE

- ID setting >
- Alarm distance >
- Alarm type >
- Sleep time >
- Proximity record >

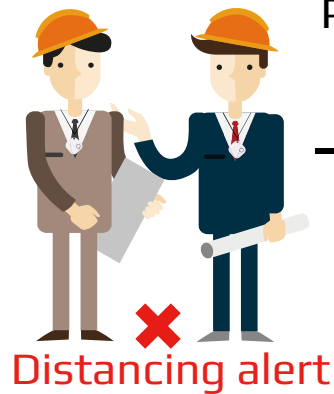
Group ID

You can configure the Group ID to identify different group. Devices will not sound alert within same Group ID. If Group ID is not set, all devices will trigger alert.

People in same Group



Safe group



People in different Group
Trigger
Sound/vibration/LED



Distancing alert

Risk state
<6 feet (2 meters)

← Beacon ID setting SAVE

Group ID

Device ID

Tip: input range 0~65535, please input valid format data. for example: 58

Alert Distance

You can adjust the distance based on different scenarios and environments.

← Alarm distance SAVE

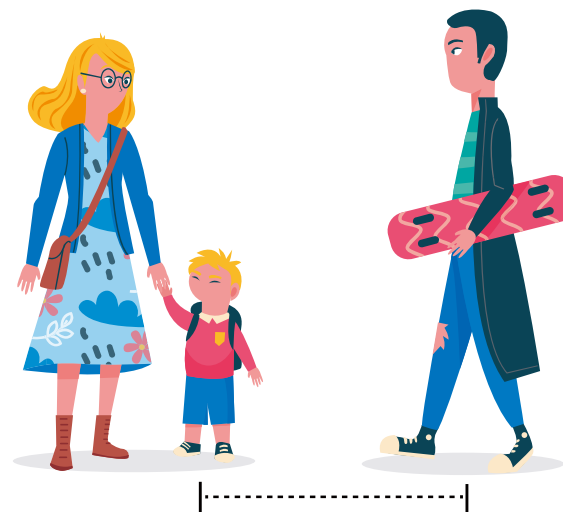
Near(1m~1.5m)	<input type="radio"/>
Middle(1.5m~2.5m)	<input type="radio"/>
Far(2.5m~3.5m)	<input checked="" type="radio"/>

Unit is meters, please select the proximity alarm distance

Waiting in line in shop



In public places



In workplace



Distancing History

View the history for when and who (Mac Address, time, Group ID, Device ID) doesn't respect the security distance. You can clear or export the records if needed.

History		CLEAR	EXPORT
2020-05-26 21:54:29	DD:35:00:00:11:1c	Group ID:0	Device ID:382
2020-05-26 21:25:49	DD:35:00:00:11:1c	Group ID:0	Device ID:382
2020-05-26 21:24:47	DD:35:00:00:11:1c	Group ID:0	Device ID:382
# No more data #			

Auto Sleep mode

You can configure the Sleep mode, the product will go into sleep mode in the preset period. You don't have to turn on or off manually!

