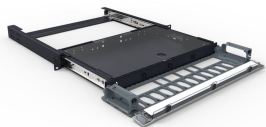


# 760193771 | 360G2-1U-MOD-SD

---



G2 1U Sliding Modular Cassette Panel \*NOTE: THIS PART IS CANCELED IN NAR & CALA – optional replacements: 760209940, HD-1U or for splicing applications 760231506, HD-1U-SP

## Product Classification

<b>Regional Availability</b>	Asia   Australia/New Zealand   EMEA
<b>Portfolio</b>	CommScope®
<b>Product Type</b>	Fiber patch panel

## General Specifications

<b>Application</b>	Accepts four G2 modular cassettes   Accepts one InstaPATCH® 360 data module or 360DP panel   Accepts two RoloSplices with three trays each
<b>Rack Units</b>	1
<b>Shelf Movement</b>	Sliding

## Dimensions

<b>Height</b>	44.45 mm   1.75 in
<b>Width</b>	482.6 mm   19 in
<b>Depth</b>	457.2 mm   18 in

## Packaging and Weights

<b>Weight, net</b>	12 lb   5.443 kg
--------------------	------------------

## Regulatory Compliance/Certifications

<b>Agency</b>	<b>Classification</b>
CHINA-ROHS	Below maximum concentration value
ISO 9001:2015	Designed, manufactured and/or distributed under this quality management system
REACH-SVHC	Compliant as per SVHC revision on <a href="http://www.commscope.com/ProductCompliance">www.commscope.com/ProductCompliance</a>
ROHS	Compliant

